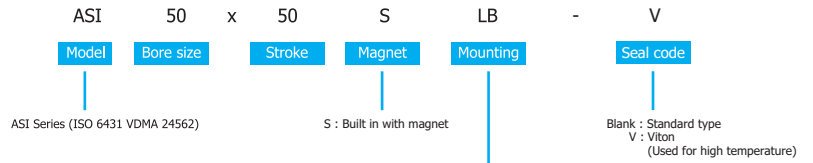
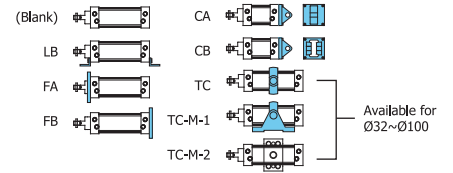
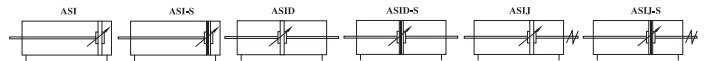


Iso6431 / **V**DMA Profile Cylinder (ASI ASID ASIJ Series)

Ordering Code



Symbol



Specifications

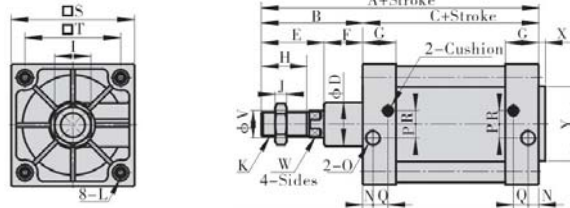
Bore size	mm	32	40	50	63	80	100	125	160	200
Rod diameter	mm	12	16	20	20	25	25	32	40	40
Port size	inch	1/8	1/4	1/4	3/8	3/8	1/2	1/2	3/4	3/4
ASI standard stroke	mm	25~300	25~400	25~500	25~500	25~600	25~600	25~800	25~800	25~800
ASID,ASIJ standard stroke	mm	25~200	25~200	25~200	25~200	25~300	25~300	25~300	25~300	25~300
ASI maximum stroke	mm	3000	3000	3000	3000	3000	3000	1500	1500	1500
ASID,ASIJ maximum stroke	mm	200	200	200	200	300	300	300	300	300
ASIJ adjusting stroke	mm	25,50,75								
Action type		Double acting								
Media		Air								
Pressure range	kgf/cm ²	1.00~9.00								
Temperature range	°C	0 ~ 70 (Viton : 120)								
Speed range	mm/sec	50 ~ 800								
Magnet type		Built in With magnet (S)								
Cushion type		Variable								
ASI mounting type		Basic (Blank),Foot (LB),Flange(FA FB),Clevis (CA CB CR),Trunnion (TC TC-M)								
ASID,ASIJ mounting type		Basic (Blank),Foot (LB),Flange(FA),Trunnion (TC TC-M)								
End rod type		I knuckle (I), Y knuckle (Y), Floating joint(FJ),Universal joint(EJ)								
Sensor switch type		Light in front (CS1-F), Light on top (CS1-U)								
Sensor switch holder		SI32-IH	SI40-IH	SI50-IH	SI63-IH	SI80-IH	SI100-IH	SI125-SH	SI160-SH	SI200-SH
Additional variants		Stainless steel piston rod, female, extended, special thread piston rod								

Other Available Series

Description	Ordering Code	Mounting type							
		LB	FA	FB	CA	CB	TC	TC-M-1	TC-M-2
<p>ASID</p>	ASID - 50 x 50 - S - LB LB : Mounting type S : Magnet 50 : Stroke 50 : Bore size ASID : Double rod series	●	●	●	×	×	●	●	●
<p>ASIJ</p>	ASIJ - 50 x 50 - 25 - S - LB LB : Mounting type S : Magnet 25 : Adjusted stroke 50 : Stroke 50 : Bore size ASIJ : Adjustable stroke series	●	●	×	×	×	●	●	●

Dimensions

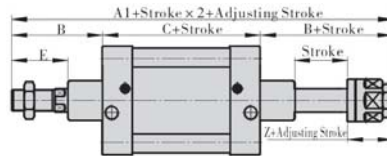
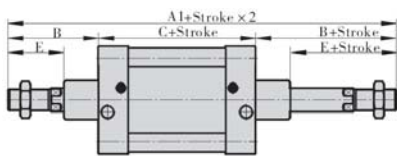
ASI



Item Bore size	A	B	C	D	E	F	G	H	I	J	K	L	N	O	P	Q	R	S	T	V	W	X	Y
32	142	48	94	30	32	16	25	22	17	6	M10 x 1.25	M6	15	1/8"	5	3	6.5	45	32.5	12	10	4	30
40	159	54	105	35	34	20	29.5	24	19	7	M12 x 1.25	M6	17.5	1/4"	7	3	7	52	38	16	13	4	35
50	175	69	106	40	42	27	32	32	24	8	M16 1.5	M8	21	1/4"	7	3	9	65	46.5	20	17	4	40
63	190	68	122	45	42	26	36	32	24	8	M16 x 1.5	M8	23	3/8"	8	5	9	76	56.5	20	17	4	45
80	214	87	128	45	52	35	37	40	30	10	M20 x 1.5	M10	24	3/8"	10	5	12	94	72	25	22	5	45
100	229	92	137	55	52	40	39	40	30	10	M20 x 1.5	M10	26	1/2"	10	5	14	112	89	25	22	6	55
125	279	117	160	60	71	46	44	54	41	10	M27 x 2	M12	29	1/2"	10	12	14	134	110	32	27	7	60
160	332	152	180	65	94	58	50	72	55	13.5	M36 x 2	M16	25	3/4"	15	12	20	180	140	40	36	-	-
200	347	167	180	75	100	67	50	72	55	13.5	M36 x 2	M16	25	3/4"	15	12	20	220	175	40	36	-	-

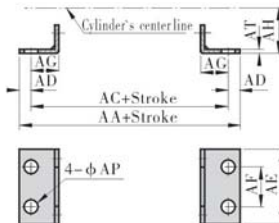
ASID

ASIJ



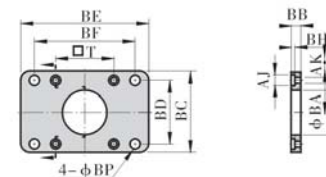
Item Bore size	A1	B	C	E	Z
32	190	48	94	32	21
40	213	54	105	34	21
50	244	69	106	42	23
63	258	68	122	42	23
80	301	87	127	52	29
100	321	92	137	52	29
125	394	117	160	71	40.5
160	458	152	180	94	50
200	486	167	180	100	54

LB



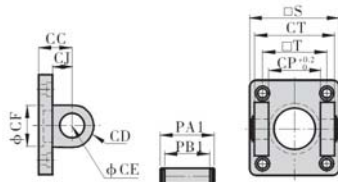
Bore size Item	32	40	50	63	80	100	125	160	200
AA	158	179	190	209	248	266	290	340	380
AC	142	161	170	185	210	228	250	300	320
AD	8	9	10	12	19	19	20	20	30
AE	47	53	65	75	95	115	140	180	220
AF	32	36	45	50	63	75	90	115	135
AG	24	28	32	32	41	45	45	60	70
AH	32	36	45	50	63	71	90	115	135
AP	7	9	9	9	12.5	14.5	16.5	18.5	24
AT	3	3	3	3	4	4	8	8	9

FA/FB



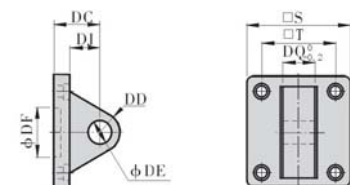
Bore size Item	32	40	50	63	80	100	125	160	200
AJ	11	11	14	14	17	17	19	25	25
AK	6.5	6.5	9	9	11	11	3	17	17
BA	30.5	35.5	40.5	45.5	45.5	55.5	60.5	65.5	75.5
BB	10	10	12	12	16	16	20	20	25
BC	50	55	68	78	100	120	140	180	220
BD	32	36	45	50	63	75	90	115	135
BE	80	90	108	120	153	178	224	280	320
BF	64	72	90	100	126	150	180	230	270
BH	6.5	6.5	8.5	8.5	10.5	10.5	12.5	13	17.5
BP	7	9	9	9	12.5	14.5	16.5	18.5	24
T	32.5	38	46.5	56.5	72	89	110	140	175

CB



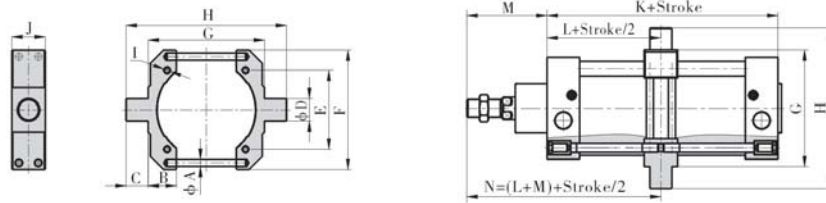
Bore size Item	32	40	50	63	80	100	125	160	200
CC	22	25	27	32	36	41	50	55	60
CD	9	12	12	15	15	20	25	30	30
CE	10	12	12	16	16	20	25	30	30
CF	30.5	35.5	40.5	45.5	49	59	66	71	81
CJ	13	16	17	22	22	27	31	35.5	36
CP	26	28	32	40	50	60	70	90	90
CT	45	52	60	70	90	110	130	170	170
PA1	51	59	67	77	97	119	139	181	181
PB1	45.5	52.5	60.5	70.5	90.5	110.5	130.5	170.5	170.5
S	47	53	65	75	95	115	140	180	220
T	32.5	38	46.5	56.5	72	89	110	140	175

CA



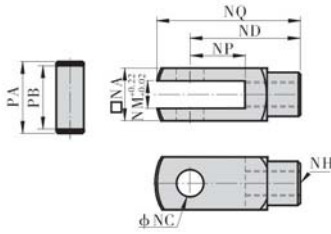
Bore size Item	32	40	50	63	80	100	125	160	200
S	47	53	65	75	95	115	140	180	220
T	32.5	38	46.5	56.5	72	89	110	140	175
DC	22	25	27	32	36	41	50	55	60
DD	9	12	12	15	15	20	25	30	30
DE	10	12	12	16	16	20	25	30	30
DF	30.5	35.5	40.5	45.5	45.5	55.5	60.5	65.5	75.5
DJ	13	16	17	22	22	27	31	35.5	36
DQ	25.8	27.8	31.7	39.7	49.7	59.7	69.7	89.7	89.7

TC



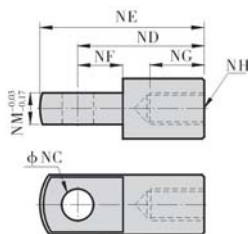
Bore size	Item	A	B	C	D	E	F	G	H	I	J	K	L	M	N
32		5	15	12	12	32.5	52	50	74	M5 x 0.8	22	94	47	48	95
40		6	18	16	16	38	65	63	95	M5 x 0.8	28	105	52.5	54	106.5
50		6	22	16	16	46.5	75	75	107	M6 x 1.0	28	106	53	69	122
63		6	24	20	20	56.5	90	90	130	M6 x 1.0	30	121	60.5	69	129.5
80		8	28	20	20	72	112	110	150	M8 x 1.25	32	128	64	86	150
100		8	32	25	25	89	135	132	182	M8 x 1.25	38	138	69	91	160

Y Knuckle



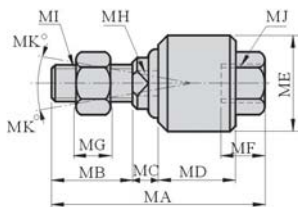
Bore size	Item	NA	NC	ND	NE	NF	NG	NH	NM	NP	NQ	PA	PB
32		19	10	40	52	15	20	M10 x 1.25	10	20	52	26.2	20
40		25.4	12	48	67	24	20	M10 x 1.25	12	24	62	32.8	26.5
50		31.7	16	64	89	32	23	M16 x1.5	16	32	80	39.3	33
63		31.7	16	64	89	32	23	M16 x1.5	16	32	80	39.3	33
80		44.4	20	80	105	40	30	M20 x1.5	20	40	105	53.3	45
100		44.4	20	80	105	40	30	M20 x1.5	20	40	105	53.3	45
125		54	30	110	150	51	45	M27 x 2.0	30	55	151.8	66	55
160		70	35	144	195	65	55	M36 x2.0	35	73	195.8	83	71
200		70	35	144	195	65	55	M36 x2.0	35	73	195.8	83	71

I Knuckle



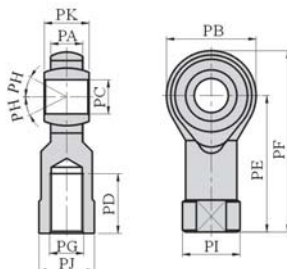
Bore size	Item	NA	NC	ND	NE	NF	NG	NH	NM	NP	NQ	PA	PB
32		19	10	40	52	15	20	M10 x 1.25	10	20	52	26.2	20
40		25.4	12	48	67	24	20	M10 x 1.25	12	24	62	32.8	26.5
50		31.7	16	64	89	32	23	M16 x1.5	16	32	80	39.3	33
63		31.7	16	64	89	32	23	M16 x1.5	16	32	80	39.3	33
80		44.4	20	80	105	40	30	M20 x1.5	20	40	105	53.3	45
100		44.4	20	80	105	40	30	M20 x1.5	20	40	105	53.3	45
125		54	30	110	150	51	45	M27 x 2.0	30	55	151.8	66	55
160		70	35	144	195	65	55	M36 x2.0	35	73	195.8	83	71
200		70	35	144	195	65	55	M36 x2.0	35	73	195.8	83	71

Floating Joint



Bore size	Item	MA	MB	MC	MD	ME	MF	MG	MH	MI	MJ	MK
32		58	22	7	21	26	11.5	7	10	M10 x 1.25	M10 x 1.25	12
40		58	22	8	21	28	11.5	8	12	M10 x 1.25	M10 x 1.25	12
50		90	27	10	41	44.5	20	10	17	M16 x1.5	M16 x1.5	7
63		90	27	10	41	44.5	20	10	17	M16 x1.5	M16 x1.5	7
80		102	29	13	46	53	24	13	22	M20 x1.5	M20 x1.5	10
100		102	29	13	46	53	24	13	22	M20 x1.5	M20 x1.5	10
125		147	54	13	64	62	39	14	30	M27 x 2.0	M27 x 2.0	9
160		251	72	22	115	80	80	18	36	M36 x2.0	M36 x2.0	4
200		251	72	22	115	80	80	18	36	M36 x2.0	M36 x2.0	4

Universal (Fish eye) Joint



Bore size	Item	PA	PB	PC	PD	PE	PF	PG	PH	PI	PJ	PK
32		11	26	10	20	43	56	M10 x 1.25	13	19	17	14
40		12	32	12	24	50	66	M10 x 1.25	13	22	19	16
50		15	40	16	28	64	84	M16 x1.5	15	27	22	21
63		15	40	16	28	64	84	M16 x1.5	15	27	22	21
80		18	46	20	35	77	100	M20 x1.5	15	34	30	25
100		18	46	20	35	77	100	M20 x1.5	15	34	30	25
125		26	66	28	51	103	136	M27 x 2.0	15	46	41	35
160		28	80	35	56	125	165	M36 x2.0	16	58	50	43
200		28	80	35	56	125	165	M36 x2.0	16	58	50	43