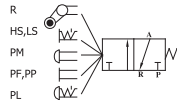


Mechanical Valve (MV132 Series)

Ordering Code

MV	R	1	32	-	06
Model	Button type	Series	Valve type		Port size
MV : Mechanical valve	R : roller HS : turn selector LS : lever selector PM : palm button PF : flat palm button PP : swell palm button PL : stop cock button HST : soft touch selector	1 : 1 Series	32 : 3port 2position		06 : 1/8"


(MVHST Series)

Symbol

Specifications

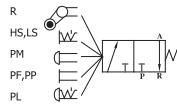
Model	MVR	MVHS,MVLS,MVHST	MVPM,MVPP,MVPP	MVPL
Color	-	Black	Red (optional Black, Green , Yellow)	Red
Media	Air			
Body material	Aluminum alloy			
Orifice	18 mm			
Pressure range	0 ~ 8 kgf/cm ²			
Range of service temperature	-10 °C ~ 80 °C			
Port size	1/8"			
Panel mounting bore size	∅30mm (optional ∅25mm)			

Mechanical Valve (MV232 Series)

Ordering Code

MV	R	2	32	-	06
Model	Button type	Series	Valve type		Port size
MV : Mechanical valve	R : roller HS : turn selector LS : lever selector PM : palm button PF : flat palm button PP : swell palm button PL : stop cock button HST : soft touch selector	2 : 2 Series	32 : 3port 2position		06 : 1/8" 08 : 1/4"


(MVHST Series)

Symbol

Specifications

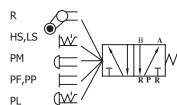
Model	MVR	MVHS,MVLS,MVHST	MVPM,MVPP,MVPP	MVPL
Color	-	Black	Red (optional Black, Green , Yellow)	Red
Media	Air			
Body material	Aluminum alloy			
Orifice	18 mm			
Pressure range	0 ~ 8 kgf/cm ²			
Range of service temperature	-10 °C ~ 80 °C			
Port size	1/8", 1/4"			
Panel mounting bore size	∅30mm (optional ∅25mm)			

Mechanical Valve (MV152 Series)

Ordering Code

MV	R	1	52	-	08
Model	Button type	Series	Valve type		Port size
MV : Mechanical valve A4RV : Heavy duty roller valve	R : roller HS : turn selector LS : lever selector PM : palm button PF : flat palm button PP : swell palm button PL : stop cock button HST : soft touch selector	1 : 1 Series	52 : 5port 2position 210 : 5port 2position		06 : 1/8" 08 : 1/4"


(A4RV Series)

Symbol

Specifications

Model	MVR,A4RV	MVHS,MVLS,MVHST	MVPM,MVPP,MVPP	MVPL
Color	-	Black	Red (optional Black, Green , Yellow)	Red
Media	Air			
Body material	Aluminum alloy			
Orifice	18 mm			
Pressure range	0 ~ 8 kgf/cm ²			
Range of service temperature	-10 °C ~ 80 °C			
Port size	1/8", 1/4"			
Panel mounting bore size	∅30mm (optional ∅25mm)			